



MONTHLY MEMBERSHIP PROGRESS REPORT

District 24 D

Results as of: 12/31/2017

GMT: CINDY GREGG

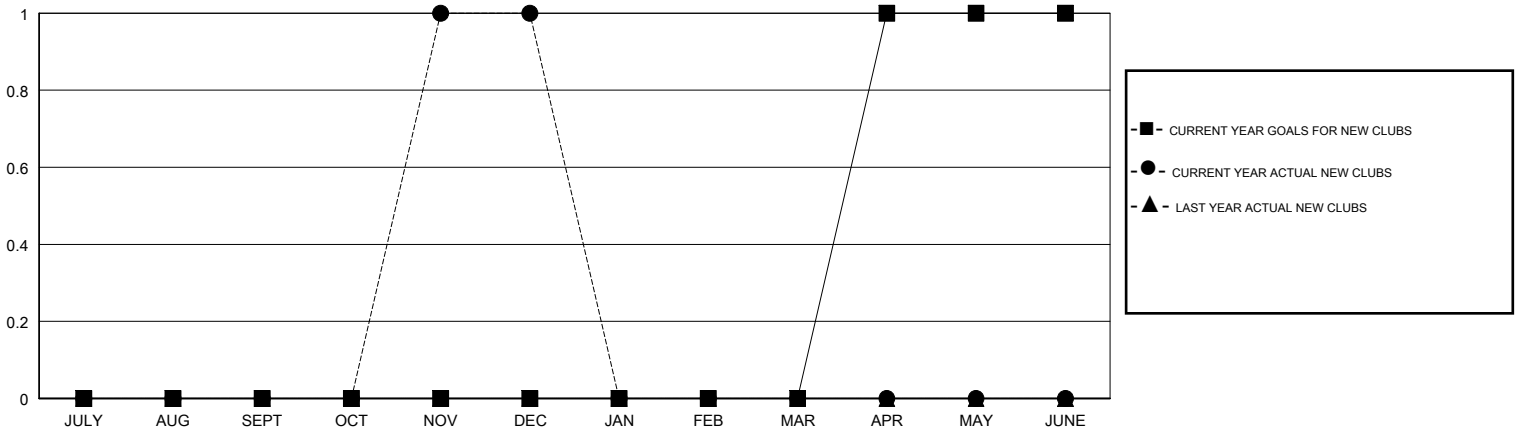
LOCATION VIRGINIA

GMT CA

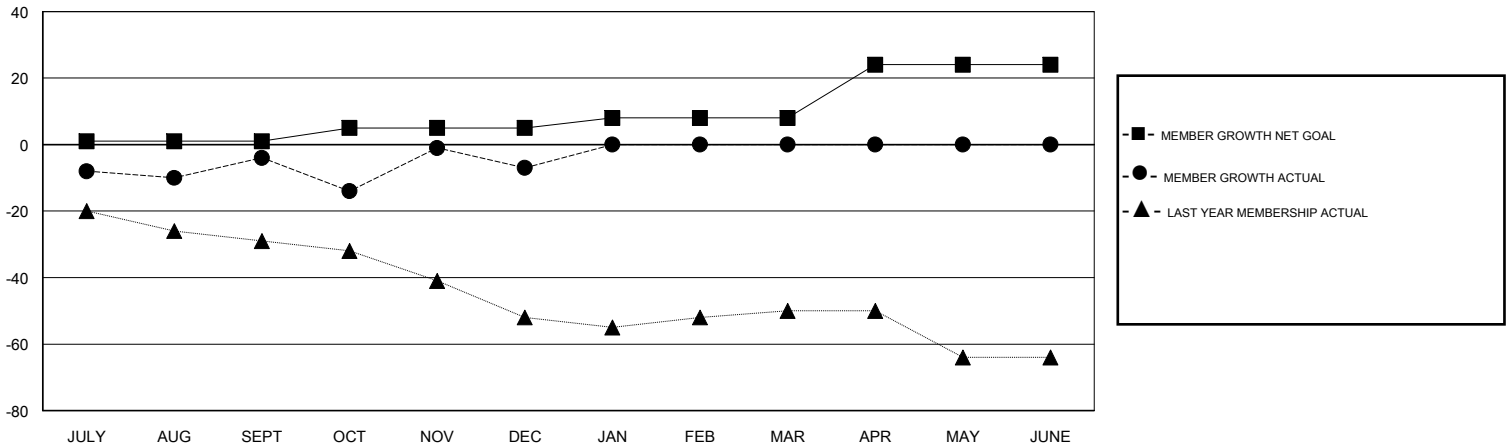
| Clubs | | | |
|-----------------------|---------------|-----------|---------------|
| RESULTS FOR 2017-2018 | | | |
| QUARTER | NEW CLUB GOAL | NEW CLUBS | DROPPED CLUBS |
| JULY/AUG/SEPT | 0 | 0 | 0 |
| OCT/NOV/DEC | 0 | 1 | 0 |
| JAN/FEB/MAR | 0 | 0 | 0 |
| APR/MAY/JUNE | 1 | 0 | 0 |

| Members | | | |
|-----------------------|------------------------|----------------------|--|
| RESULTS FOR 2017-2018 | | | |
| QUARTER | MEMBER GROWTH NET GOAL | MEMBER GROWTH ACTUAL | DROPPED MEMBERS ACTUAL (including transfers) |
| JULY/AUG/SEPT | 1 | 27 | 29 |
| OCT/NOV/DEC | 4 | 45 | 47 |
| JAN/FEB/MAR | 3 | 0 | 0 |
| APR/MAY/JUNE | 16 | 0 | 0 |

GOALS AND ACTUAL NEW CLUBS CUMULATIVE



GOALS AND ACTUAL MEMBERS CUMULATIVE



| |
|------------------|
| DROPPED CLUBS: 0 |
|------------------|

29 CLUBS OF 57 ADDED 1 OR MORE NEW MEMBERS

| GENDER DISTRIBUTION | |
|--|--------------|
| MALE | 907 (65.53%) |
| FEMALE | 477 (34.47%) |
| Women Percentage Fiscal Year Goal: 35% | |

| DROPPED MEMBERS | |
|-----------------|-----------|
| DECEASED | 13 |
| CLUB CANCELLED | 0 |
| OTHER | 63 |
| TOTAL | 76 |

[CLICK HERE FOR CUMULATIVE MEMBERSHIP DATA](#)

| | |
|---------------------------------|-----|
| TOTAL FAMILY UNIT MEMBERS | 265 |
| FAMILY MEMBERS PAYING HALF DUES | 135 |